

CARLO RAIMONDI



Tower Crane

City Crane MR99

Luffing Jib Crane

MR99

Realizzata con materiali strutturali di alta qualità, dispone di un braccio di 58 metri. Si monta facilmente e in poco tempo, per operare al meglio anche in centri urbani. Un'ottima sintesi di semplicità, efficienza ed affidabilità.

MR99

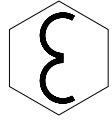
Manufactured with high-level structural materials, this crane is equipped with a 58 m. jib.

It can be assembled easily and quickly and is ideal for operation in urban areas too.

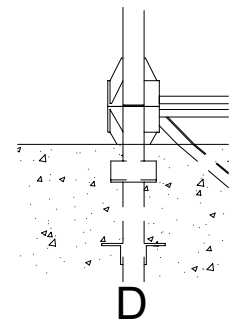
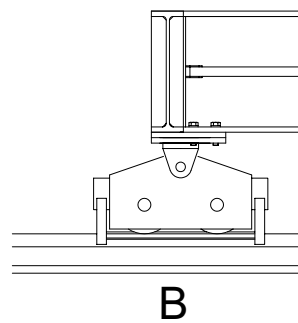
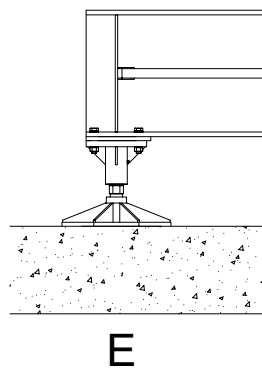
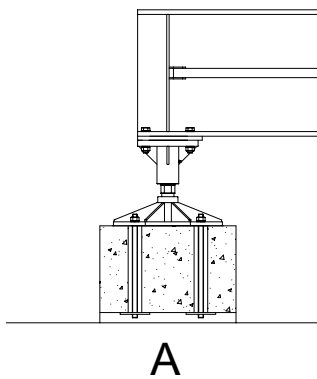
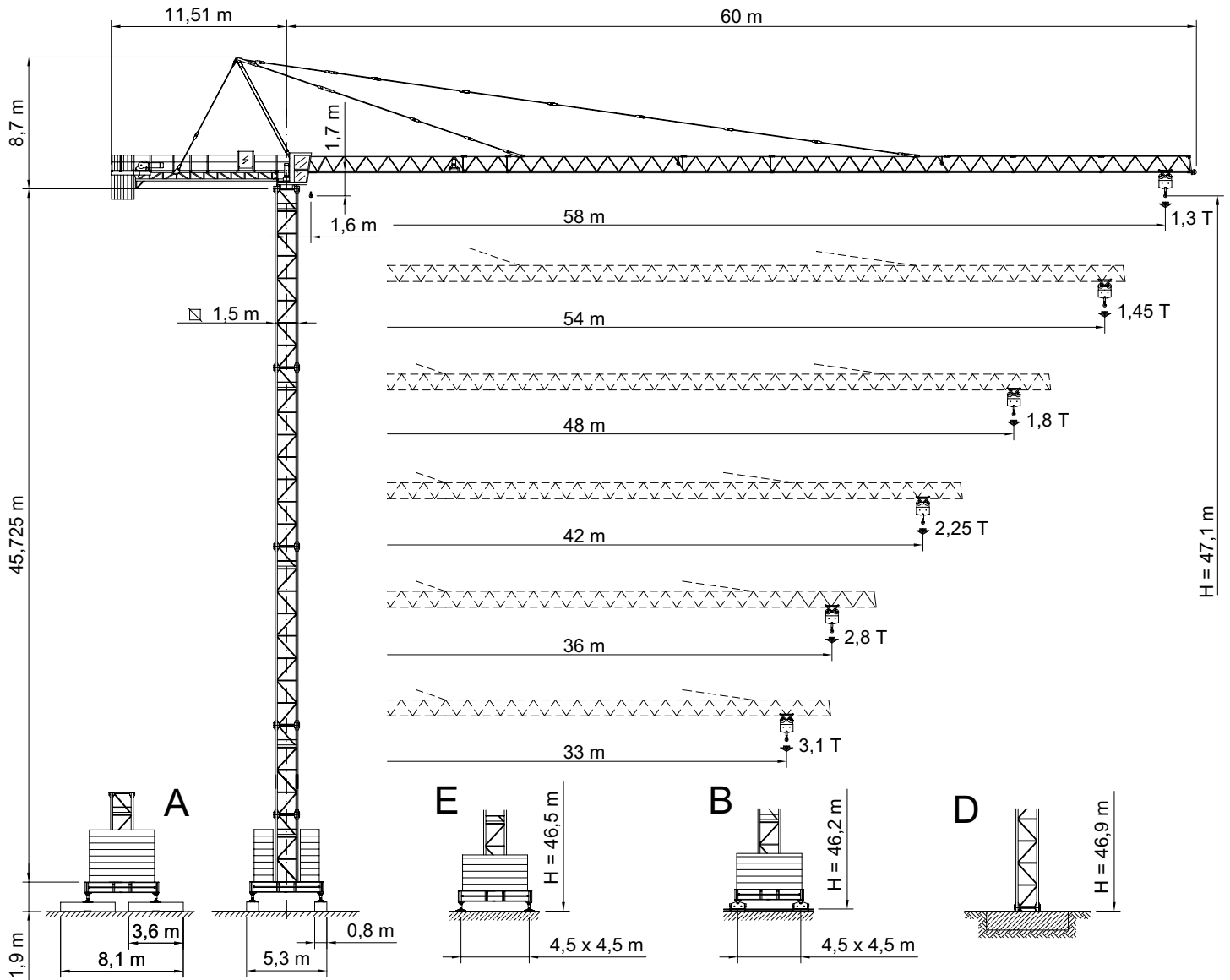
A perfect synthesis of simplicity, efficiency and reliability.

City Crane MR 99




GRU A TORRE A MONTAGGIO RAPIDO
«CITY TOWER CRANE»



H1 B3 DIN151018 / A4 FEM1,001



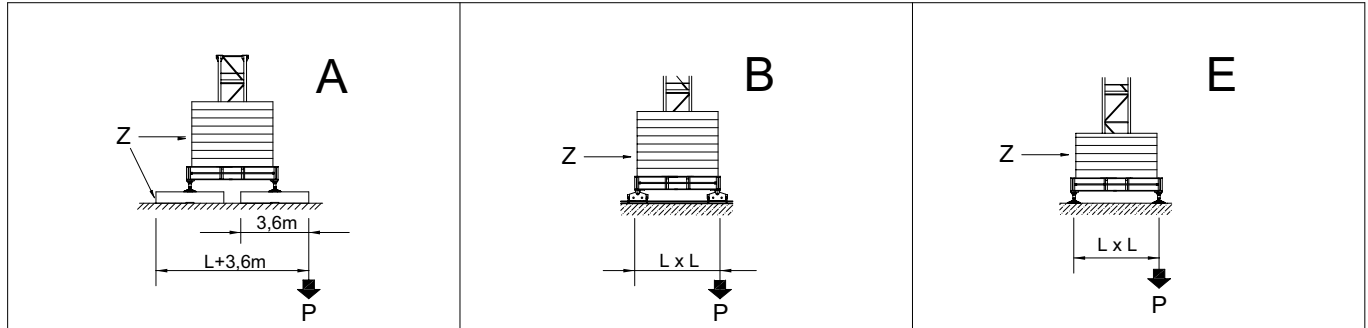
RAGGI E PORTATE
RADIUS AND S.W.L.
PORTEE ET CHARGE
AUSLADUNG UND TRAGFAHIGKEIT

Portata max / Max s.w.l. Charge maxi / Max. Tragfähigkeit		3000 kg. 						6000 kg.  / 3000 kg. 					
Sbraccio / Jib Ausladung / Portée	m.	33	36	42	48	54	58	33	36	42	48	54	58
Campo di portata max da Max s.w.l. range from Charge maxi de Max. Tragfähigkeit von	1,6 m a to à bis	33,0	33,9	32,6	30,8	28,9	28,4	18,45	17,9	17,3	16,4	15,5	15,2
Sbraccio (m.) Radius (m.) Portée (m.) Ausladung (m.)	12	3000	3000	3000	3000	3000	3000	6000	6000	6000	6000	6000	6000
	14	3000	3000	3000	3000	3000	3000	6000	6000	6000	6000	6000	6000
	16	3000	3000	3000	3000	3000	3000	6000	6000	6000	6000	5781	5685
	18	3000	3000	3000	3000	3000	3000	6000	5963	5736	5401	5062	4976
	20	3000	3000	3000	3000	3000	3000	5482	5300	5096	4795	4491	4415
	22	3000	3000	3000	3000	3000	3000	4926	4761	4577	4304	4029	3959
	24	3000	3000	3000	3000	3000	3000	4466	4314	4146	3897	3645	3585
	26	3000	3000	3000	3000	3000	3000	4078	3939	3784	3554	3323	3265
	28	3000	3000	3000	3000	3000	3000	3747	3618	3475	3262	3047	2994
	30	3000	3000	3000	3000	2876	2820	3462	3342	3208	3010	2810	2760
	32	3000	3000	3000	2869	2674	2621	3213	3100	2975	2790	2603	2556
	33	3000	3000	2958	2771	2582	2531	3100	2991	2870	2690	2509	2463
	34		2986	2861	2679	2496	2446		2888	2770	2596	2420	2376
	36		2800	2682	2510	2338	2291		2700	2589	2424	2259	2217
	38			2523	2360	2197	2153			2427	2271	2114	2075
	40			2379	2225	2070	2028			2281	2133	1985	1947
	42			2250	2103	1956	1916			2150	2009	1868	1832
	44				1993	1852	1814				1896	1761	1727
	46				1892	1757	1721				1794	1665	1632
48				1800	1671	1636				1700	1576	1545	
50					1591	1558					1495	1465	
52					1518	1486					1419	1391	
54					1450	1419					1350	1322	
56						1358						1259	
58						1300						1200	

BRACCIO E CONTRAPPESO
JIB AND COUNTERWEIGHT
FLECHE ET CONTREPOID
AUSLEGER UND GEGENGEWICHTSBALLAST

Braccio / Jib Flèche / Ausleger	(m)	33	36	42	48	54	58
Contrappeso / Counterweight Contrepoïd / Gegengewicht	(t)	7,146	7,981	9,559	11,415	14,703	14,703
Composizione Composition Komposition	Tipo / Type	Quantità / Quantity / Nombre / Anzahl					
	A99	3	3	3	4	4	4
	B99		1	1	1	2	2
	C99	1		1	1	1	1
	D99					1	1

ALTEZZA SOTTO-GANCIO, ZAVORRA DI BASE, REAZIONI
 H.U.H., MAX. BASE BALLAST AND CORNER PRESSURE
 H.S.C., LEST DE BASE MAXI ET REACTIONS
 HAKENHOHEN, MAXIMALE ZENTRALBALLASTE UND ECKKRAFT



SU BASE / ON CROSSBASE
 SUR CHASSIS / AUF KREUZRAHME

$L = 4,5 \text{ m}$

H (m)	max. Z (t)	P (kN)	H (m)	max. Z (t)	P (kN)	H (m)	max. Z (t)	P (kN)
13,2	33,40	285	12,3	35,40	278	12,6	35,40	277
19,1	33,40	304	18,2	35,40	291	18,5	35,40	290
25,0	33,40	320	24,1	35,40	306	24,4	35,40	305
30,9	33,40	339	30,0	35,40	326	30,3	35,40	323
36,8	45,20	403	35,9	47,20	399	36,2	47,20	396
42,7	62,90	533	41,8	64,90	520	42,1	64,90	516
47,1	74,70	642	46,2	70,80	597	46,5	70,80	593

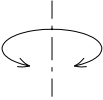
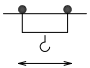
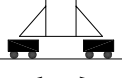
SU BASE / ON CROSSBASE
 SUR CHASSIS / AUF KREUZRAHME

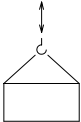


$L = 3,8 \text{ m}$

H (m)	max. Z (t)	P (kN)	H (m)	max. Z (t)	P (kN)	H (m)	max. Z (t)	P (kN)
13,2	40,90	335	12,3	40,40	333	12,6	40,40	319
19,1	40,90	351	18,2	40,40	352	18,5	40,40	337
25,0	40,90	369	24,1	40,40	373	24,4	40,40	357
30,9	46,00	399	30,0	45,40	403	30,3	45,40	386
36,8	61,10	471	35,9	60,60	459	36,2	60,60	440
42,7	76,30	629	41,8	75,70	600	42,1	75,70	575

SU PLINTO / STATIONARY
 SUR PIEDS DE SCELLEMENT / STATIONAR

	H (m)	11,5	17,4	23,3	29,2	35,1	41,0	46,9		H (m)	55,7
	T (kN)	290	311	347	435	554	770	1064		T (kN)	1553
	P (kN)	412	453	504	584	735	962	1274		P (kN)	1782
	q max. (Kg/cm ²)	0,49	0,70	0,75	0,85	1,00	1,29	1,82		q max. (Kg/cm ²)	1,70







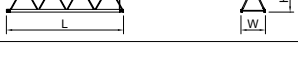

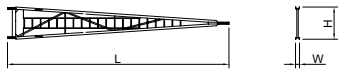
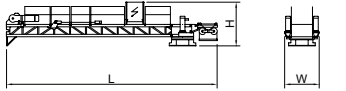
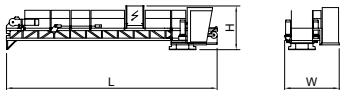
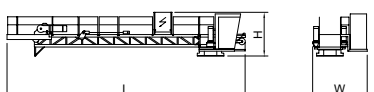
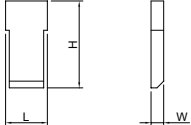
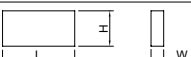
		Velocità / Speed / Vitesse / Geschwindigkeit	Potenza / Power / Puissance / Leistung
Rotazione Slewing Orientation Schwenken		0,23 / 0,47 / 0,71 min ⁻¹	2 x 3,2 Kw
Carrello Trolley Chariot Katzfahren		27 / 54 m/min	5,5 Kw
		18,8 / 35,2 / 54 m/min Progressivo - Progressive	5,5 Kw
Traslazione Rail Translation Kranfahren		18 m/min	2 x 3 Kw

Argano Winch Treuril Hubwerk		Marcia Step Vitesse Gang	Carico / velocità - Load / speed Charge / vitesse - Tragfähigkeit / Geschwindigkeit	
				
Tipo Type Type Typ	25 HP 18,4 Kw - 6	1	3000 Kg - 7,5 m/min	6000 Kg - 3,7 m/min
		2	3000 Kg - 30 m/min	6000 Kg - 15 m/min
		3	1500 Kg - 60 m/min	3000 Kg - 30 m/min
	33 HP 24,3 Kw - 6	1	3000 Kg - 9,4 m/min	6000 Kg - 4,7 m/min
		2	3000 Kg - 37,5 m/min	6000 Kg - 18,8 m/min
		3	1500 Kg - 75 m/min	3000 Kg - 37,5 m/min
	25 HP 18,4 Kw - 6VF INVERTER	1	3000 Kg - 6 m/min	6000 Kg - 3 m/min
		2	3000 Kg - 30 m/min	6000 Kg - 15 m/min
		3	1500 Kg - 60 m/min	3000 Kg - 30 m/min
			1000 Kg - 72 m/min	2000 Kg - 36 m/min
	33 HP 24,3 Kw - 6VF INVERTER	1	3000 Kg - 7,5 m/min	6000 Kg - 3,7 m/min
		2	3000 Kg - 37,5 m/min	6000 Kg - 18,8 m/min
3		1500 Kg - 75 m/min	3000 Kg - 37,5 m/min	
		1000 Kg - 90 m/min	2000 Kg - 45 m/min	

Conforme alla direttiva CEE 84/534 sul livello acustico - In compliance with the EEC 84/534 instruction on noise level - Conforme à directive CEE 84/534 sur le niveau acoustique
Gemäss EWG 84/534 über Schall - Leistungspegel - Conforme con la directive CEE 84/534 sobre el nivel acustico.

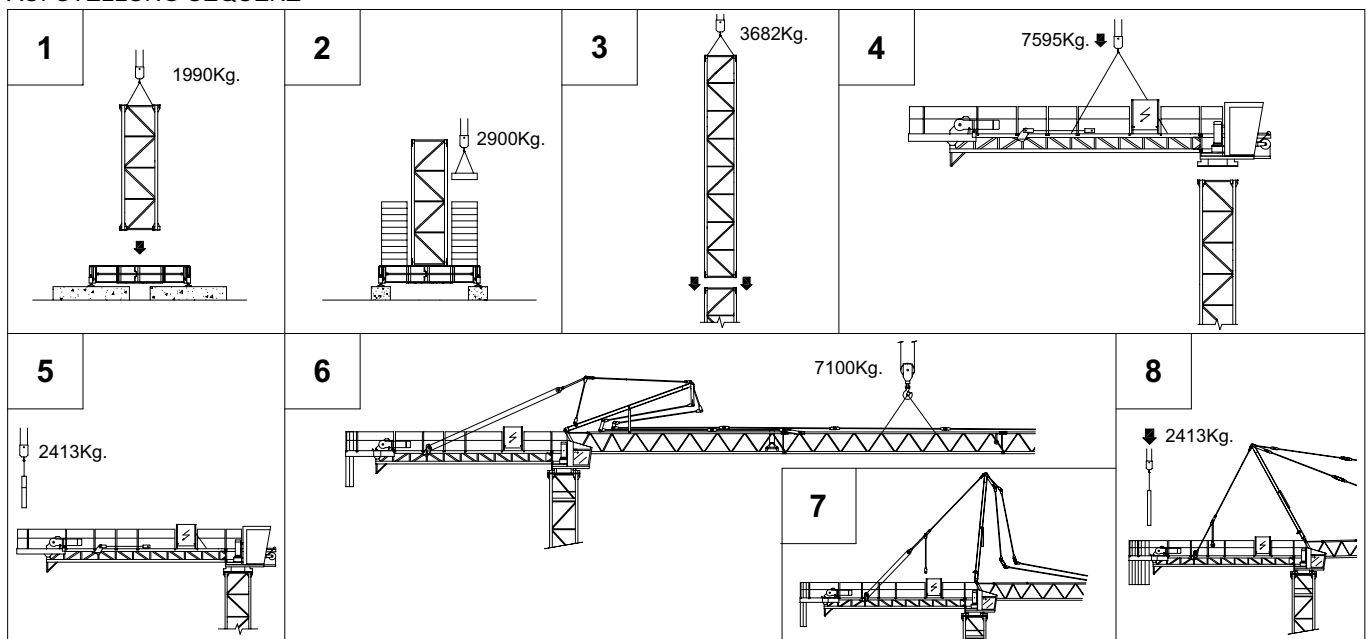
FORZA MOTRICE TOTALE TOTAL INSTALLED POWER PUISSANCE TOTALE DES MOTEURS GESAMT-MOTORENLEISTUNG	18,4 Kw (25HP)	24,3 Kw (33HP)
	37 Kw	43 Kw

LISTA DEI PESI / PACKING LIST
LISTE DE COLISAGE / KOLLI-LISTE

Pos. Item	Pezzi Pieces	Denominazione Description	Schizzo Sketch	Dimensioni Dimensions			Peso Weight (Kg)	
				L	W	H	Unit.	Total.
1	1	Elemento di freccia Jib element Elément de flèche Ausleger	N°1 	11,780	1,200	1,451	972	972
	1		N°2 	3,070	1,200	1,180	233	233
	1		N°3 	11,770	1,200	1,180	843	843
	1		N°4 	5,970	1,200	1,180	400	400
	1		N°5 	11,760	1,200	1,180	776	776
	1		N°5b 	4,520	1,200	1,180	293	293
	2		N°6-7 	5,960	1,200	1,180	368	736
	1	Puntale freccia Jib point Elément pointe Spitzelement 	1,315	1,200	1,300	75	75	
2	1	Cuspide A frame Pointe Turmspitze 	7,350	0,415	1,105	459	459	
3	1	Controfreccia girevole,organo di sollev. quadro elettrico, carrello freccia etc. Counterjib-turtable, hoisting winch, trolley jib, electrical box etc. Contreflèche tournante, treuil de levage, chariot de flèche, armoire électrique etc. Gegenausleger, Hubwinde, Drehwerk Laufkatze, Schaltschrank etc. 	11,955	1,980	2,475	6635	6635	
	1	Controfreccia girevole,organo di sollev. quadro elettr., carrello freccia,cabina. Counterjib-turtable, hoisting winch, acces balcony, electrical box, trolley jib, cabin etc. Contreflèche tournante,treuil de levage, chariot de flèche, armoire électrique, cabine. Gegenausl., Drehwerk, Hubwinde, Laufkatze, Kabine, Schaltschrank, Kabinepodest. 	11,955	3,150	2,475	7205	7205	
4	1	Controfreccia girevole,organo sollev., quadro elettrico, carrello freccia,cabina elemento porta-blocchi. Counterjib-turtable, hoisting winch, cabin,trolley jib, electrical box, acces balcony,terminal element. Contrefl. tournante,treuil de levage, chariot de flèche armoire électrique, cabine et element terminal. Gegenausl., Drehwerk, Hubwinde, Laufkatze, Kabine Schaltschrank, Kabinepodest, Gegengewichtelement. 	13,500	3,150	2,475	7595	7595	
5	4	Blocchi di contrappeso Counterweight block Contre-poids Gegengewichtsbloecke 	A99	1,430	0,200	3,265	1856	7424
	2		B99	1,430	0,260	3,265	2413	4826
	1		C99	1,430	0,170	3,265	1578	1578
	1		D99 	1,450	0,290	0,900	875	875

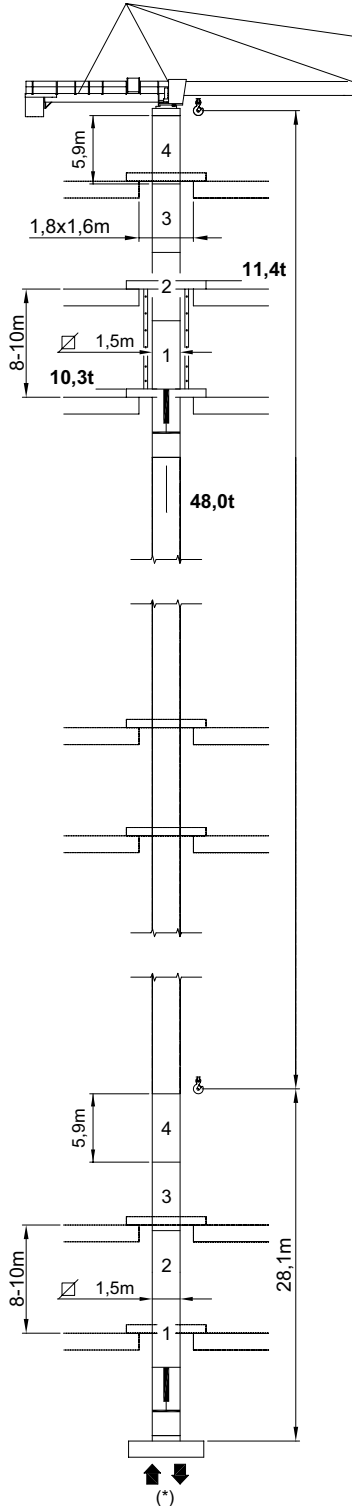
Pos. Item	Pezzi Pieces	Denominazione Description	Schizzo Sketch	Dimensioni Dimensions			Peso Weight (Kg)		
				L	W	H	Unit.	Total.	
6	-	Elemento di torre Tower element Elément de mature Turmstück		2,950	1,700	1,500	1172	1172	
7	-			4,425	1,700	1,500	1590	1590	
8	-			5,900	1,700	1,500	1990	1990	
9	-			11,800	1,700	1,500	3682	3682	
10	1	Tronchetto di fondazione Expendable foundation element Elément a sceller Fundamentanker		1,465	1,780	1,780	780	780	
11	1	Trave principale della crociera di base Base main beam Poutre de chassis de base Hauptträger für Kreuzgelenk		4,5x4,5mt	6,530	0,710	0,760	2120	2120
				3,8x3,8mt	5,535	0,710	0,760	1460	1460
12	2	Semitrave della crociera di base Half base beam Semipoutre de chassis de base Halbträger für Kreuzgelenk		4,5x4,5mt	3,200	0,590	0,770	1030	2060
				3,8x3,8mt	2,620	0,590	0,770	940	1880
13	4	Blocco di appoggio Concrete pad Sabot en béton Betonfuss (B2)		3,600	0,800	0,600	3925	15700	
14	2	Bilancino di traslazione folle Driven bogie Boggie fou Fahrschemel ohne motorantrieb		1,080	0,230	0,515	415	830	
15	2	Bilancino di traslazione motorizzato Driving bogie Boggie motorisée Fahrschemel mit motorantrieb		1,550	0,500	0,515	535	1070	
16	26	Blocco di zavorra Base ballast block Lest de base Grundballastblöcken (GB3)		3,600	1,200	0,300	2900	75400	

SEQUENZA DI MONTAGGIO
ASSEMBLING SEQUENCE
SEQUENCE DE MONTAGE
AUFSTELLUNG SEQUENZ



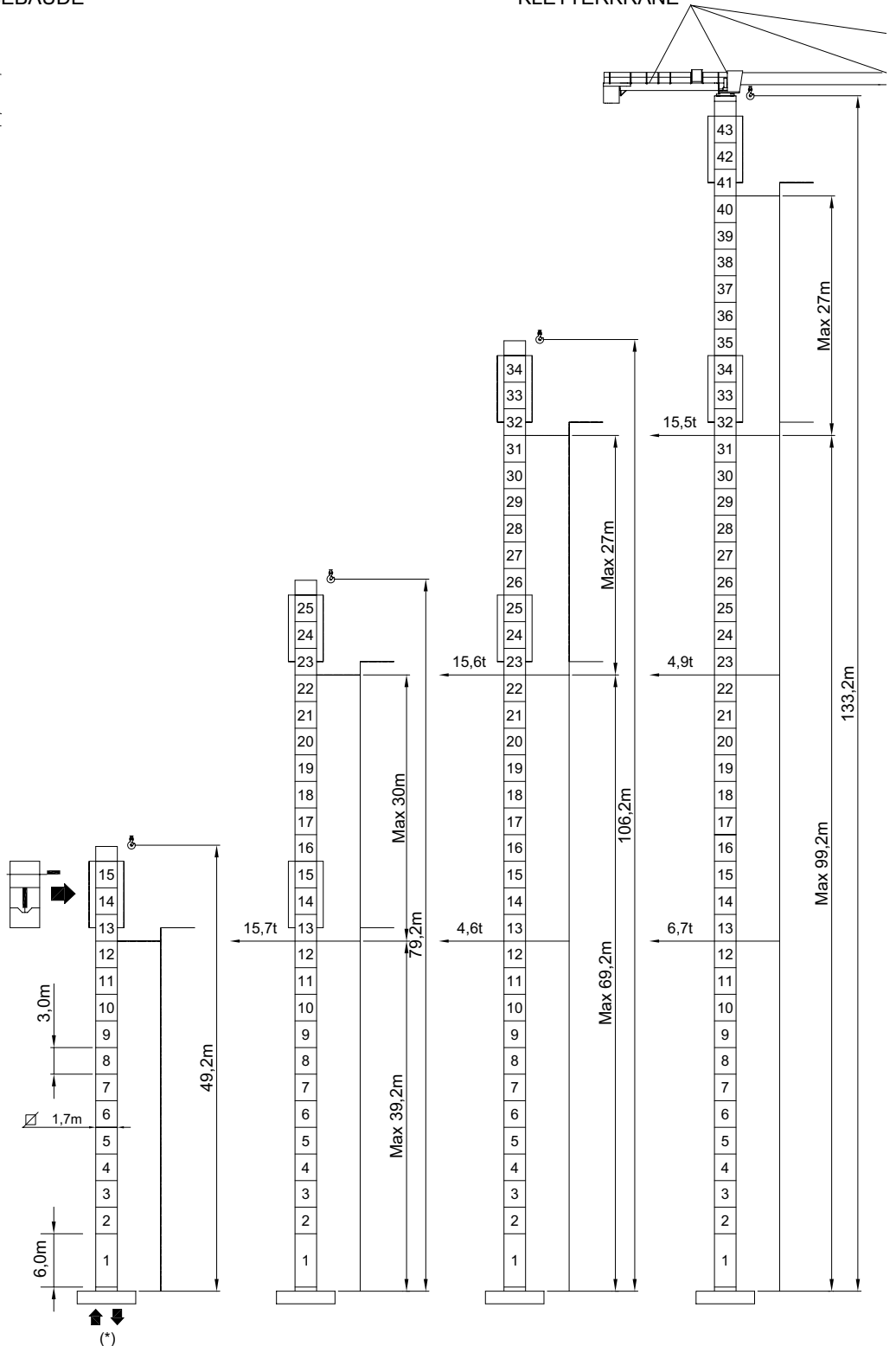
MR 99 RI

RAMPANTE
FLOOR CLIMBING
TELESCOPABLE SUR DALLES
KLETTERKRANE IM GEBAUDE



MR 99 HC

A SOPRALZO IDRAULICO
EXTERNAL CLIMBING
TELESCOPABLE
KLETTERKRANE



* Vedi tabella a pag. 4 - See table at page 4 - Voir table à la page 4 - Siehe tafel an seite 4

