

CARLO RAIMONDI



Tower Crane

City Crane MR108

Luffing Jib Crane

MR108

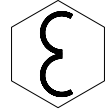
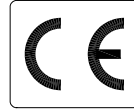
Realizzata con materiali strutturali di alta qualità, dispone di un braccio di 50 metri. Si monta facilmente e in poco tempo, per operare al meglio anche in centri urbani. Un'ottima sintesi di semplicità, efficienza ed affidabilità.

MR108

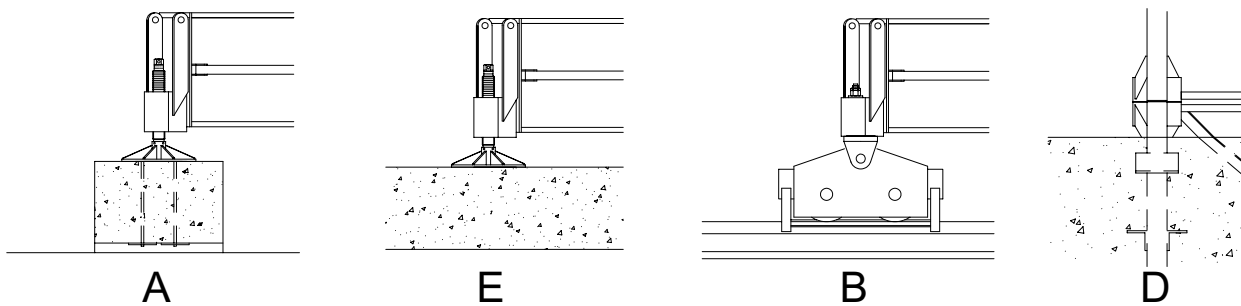
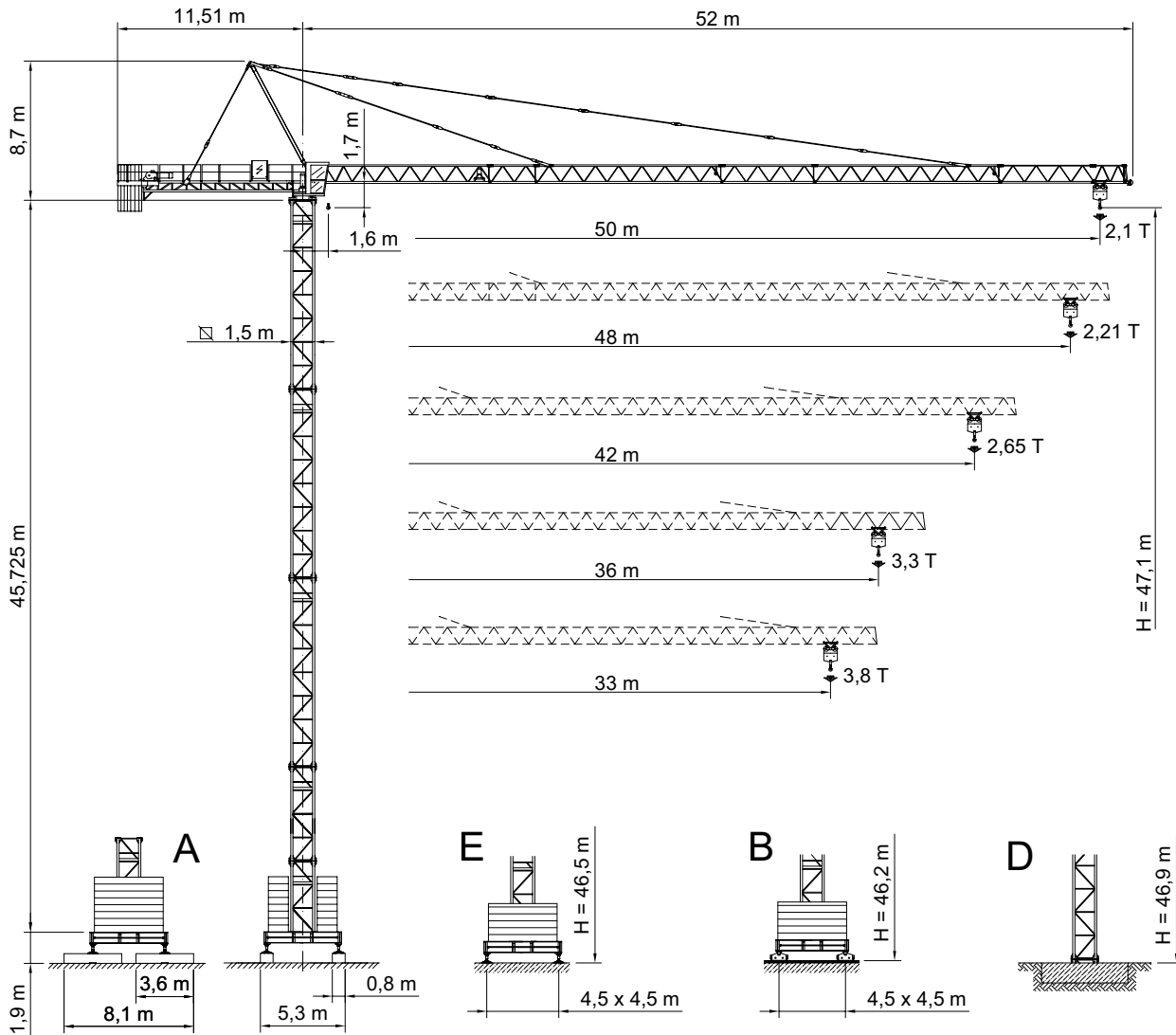
Manufactured with high-level structural materials, this crane is equipped with a 50 m. jib. It can be assembled easily and quickly and is ideal for operation in urban areas too. A perfect synthesis of simplicity, efficiency and reliability.

City Crane MR 108





GRU A TORRE A MONTAGGIO RAPIDO
«CITY TOWER CRANE»



FEM1,001 - A4



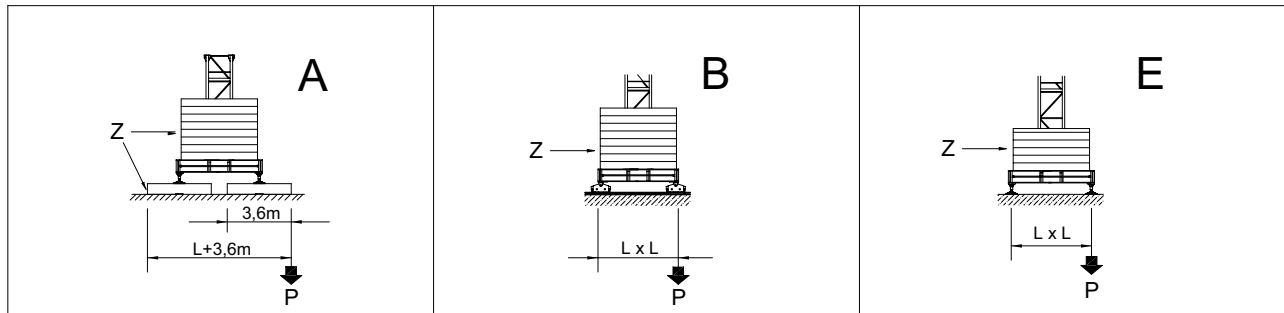
RAGGI E PORTATE
RADIUS AND S.W.L.
PORTEE ET CHARGE
AUSLADUNG UND TRAGFAHIGKEIT

Portata max / Max s.w.l. Charge maxi / Max. Tragfähigkeit		6000 kg.  / 3000 kg. 					8000 kg.  / 4000 kg. 				
Sbraccio / Jib Ausladung / Portée	m.	33	36	42	48	50	33	36	42	48	50
Campo di portata max da Max s.w.l. range from Charge maxi de Max. Tragfähigkeit von	1,6 m a to à bis	21,96	21,19	20,51	20,14	20,11	16,92	16,33	15,81	15,53	15,52
Sbraccio (m.) Radius (m.) Portée (m.) Ausladung (m.)	12	6000	6000	6000	6000	6000	8000	8000	8000	8000	8000
	14	6000	6000	6000	6000	6000	8000	8000	8000	8000	8000
	16	6000	6000	6000	6000	6000	8000	8000	7896	7744	7735
	18	6000	6000	6000	6000	6000	7475	7189	6931	6797	6789
	20	6000	6000	6000	6000	6000	6654	6398	6167	6047	6040
	22	5988	5756	5547	5438	5431	5988	5756	5547	5438	5431
	24	5436	5224	5033	4933	4927	5436	5224	5033	4933	4927
	26	4972	4776	4601	4509	4503	4972	4776	4601	4509	4503
	28	4576	4394	4232	4147	4141	4576	4394	4232	4147	4141
	30	4234	4065	3913	3834	3829	4234	4065	3913	3834	3829
	32	3935	3777	3635	3561	3557	3935	3777	3635	3561	3557
	33	3800	3647	3509	3437	3433	3800	3647	3509	3437	3433
	34		3524	3391	3321	3317		3524	3391	3321	3317
	36		3300	3174	3108	3104		3300	3174	3108	3104
	38			2981	2918	2915			2981	2918	2915
	40			2807	2748	2744			2807	2748	2744
	42			2650	2594	2590			2650	2594	2590
	44				2454	2451				2454	2451
46				2327	2324				2327	2324	
48				2210	2207				2210	2207	
50					2100					2100	

BRACCIO E CONTRAPPESO
JIB AND COUNTERWEIGHT
FLECHE ET CONTREPOID
AUSLEGER UND GEGENGEWICHTSBALLAST

Braccio / Jib Flèche / Ausleger	(m)	33	36	42	48	50
Contrappeso / Counterweight Contrepoid / Gegengewicht	(t)	8,214	8,214	10,627	13,365	13,365
Composizione Composition Komposition	Tipo / Type	Quantità / Quantity / Nombre / Anzahl				
	A108	3	3	3	4	4
	B99			1	1	1

ALTEZZA SOTTO-GANCIO, ZAVORRA DI BASE, REAZIONI
 H.U.H., MAX. BASE BALLAST AND CORNER PRESSURE
 H.S.C., LEST DE BASE MAXI ET REACTIONS
 HAKENHOHEN, MAXIMALE ZENTRALBALLASTE UND ECKKRAFT



SU BASE / ON CROSSBASE **L = 4,5 m**
 SUR CHASSIS / AUF KREUZRAHME

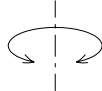
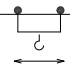
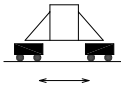
H (m)	max. Z (t)	P (kN)	H (m)	max. Z (t)	P (kN)	H (m)	max. Z (t)	P (kN)
13,2	33,40	285	12,3	35,40	278	12,6	35,40	277
19,1	33,40	304	18,2	35,40	291	18,5	35,40	290
25,0	33,40	320	24,1	35,40	306	24,4	35,40	305
30,9	33,40	339	30,0	35,40	326	30,3	53,10	323
36,8	45,20	403	35,9	47,20	399	36,2	53,10	508
42,7	62,90	533	41,8	64,90	520	42,1	70,80	559
47,1	74,70	642	46,2	70,80	597	46,5	82,60	697

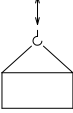


SU BASE / ON CROSSBASE **L = 3,8 m**
 SUR CHASSIS / AUF KREUZRAHME

H (m)	max. Z (t)	P (kN)	H (m)	max. Z (t)	P (kN)	H (m)	max. Z (t)	P (kN)
13,2	40,90	335	12,3	40,40	333	12,6	40,40	319
19,1	40,90	351	18,2	40,40	352	18,5	40,40	337
25,0	40,90	369	24,1	40,40	373	24,4	40,40	357
30,9	46,00	399	30,0	45,40	403	30,3	45,40	386
36,8	61,10	471	35,9	60,60	459	36,2	60,60	440
42,7	76,30	629	41,8	75,70	600	42,1	75,70	575

SU PLINTO / STATIONARY
 SUR PIEDS DE SCELLEMENT / STATIONAR

	H (m)	11,5	17,4	23,3	29,2	35,1	41,0	46,9
	T (kN)	290	311	347	435	554	770	1064
	P (kN)	412	453	504	584	735	962	1274
	q max. (Kg/cm ²)	0,49	0,70	0,75	0,85	1,00	1,29	1,82
	H (m)	55,7						
	T (kN)	1553						
	P (kN)	1782						
	q max. (Kg/cm ²)	1,70						

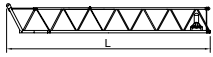
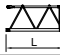
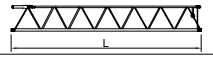
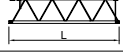

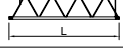



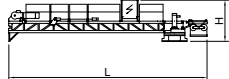


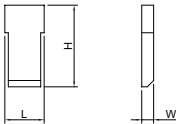
		Velocità / Speed / Vitesse / Geschwindigkeit	Potenza / Power / Puissance / Leistung
Rotazione Slewing Orientation Schwenken		0,23 / 0,47 / 0,71 min ⁻¹	2 x 3,2 Kw
Carrello Trolley Chariot Katzfahren		27 / 54 m/min	5,5 Kw
		18,8 / 35,2 / 54 m/min Progressivo - Progressive	5,5 Kw
Traslazione Rail Translation Kranfahren		18 m/min	2 x 3 Kw

Argano Winch Treuil Hubwerk		Marcia Step Vitesse Gang	Carico / velocità - Load / speed Charge / vitesse - Tragfähigkeit / Geschwindigkeit	
				
Tipo Type Type Typ	25 HP 18,4 Kw - 6	1	3000 Kg - 7,5 m/min	6000 Kg - 3,7 m/min
		2	3000 Kg - 30 m/min	6000 Kg - 15 m/min
		3	1500 Kg - 60 m/min	3000 Kg - 30 m/min
	33 HP 24,3 Kw - 8	1	4000 Kg - 7 m/min	8000 Kg - 3,5 m/min
		2	4000 Kg - 28 m/min	8000 Kg - 14 m/min
		3	2000 Kg - 56 m/min	4000 Kg - 28 m/min
	25 HP 18,4 Kw - 6VF INVERTER	1	3000 Kg - 6 m/min	6000 Kg - 3 m/min
		2	3000 Kg - 30 m/min	6000 Kg - 15 m/min
		3	1500 Kg - 60 m/min	3000 Kg - 30 m/min
			1000 Kg - 72 m/min	2000 Kg - 36 m/min
	33 HP 24,3 Kw - 8VF INVERTER	1	4000 Kg - 5,6 m/min	8000 Kg - 2,8 m/min
		2	4000 Kg - 28 m/min	8000 Kg - 14 m/min
3		2000 Kg - 56 m/min	4000 Kg - 28 m/min	
		1300 Kg - 67 m/min	2600 Kg - 33,6 m/min	

Conforme alla direttiva CEE 84/534 sul livello acustico - In compliance with the EEC 84/534 instruction on noise level - Conforme à directive CEE 84/534 sur le niveau acoustique
Gemäss EWG 84/534 über Schall - Leistungspegel - Conforme con la direttiva CEE 84/534 sobre el nivel acustico.

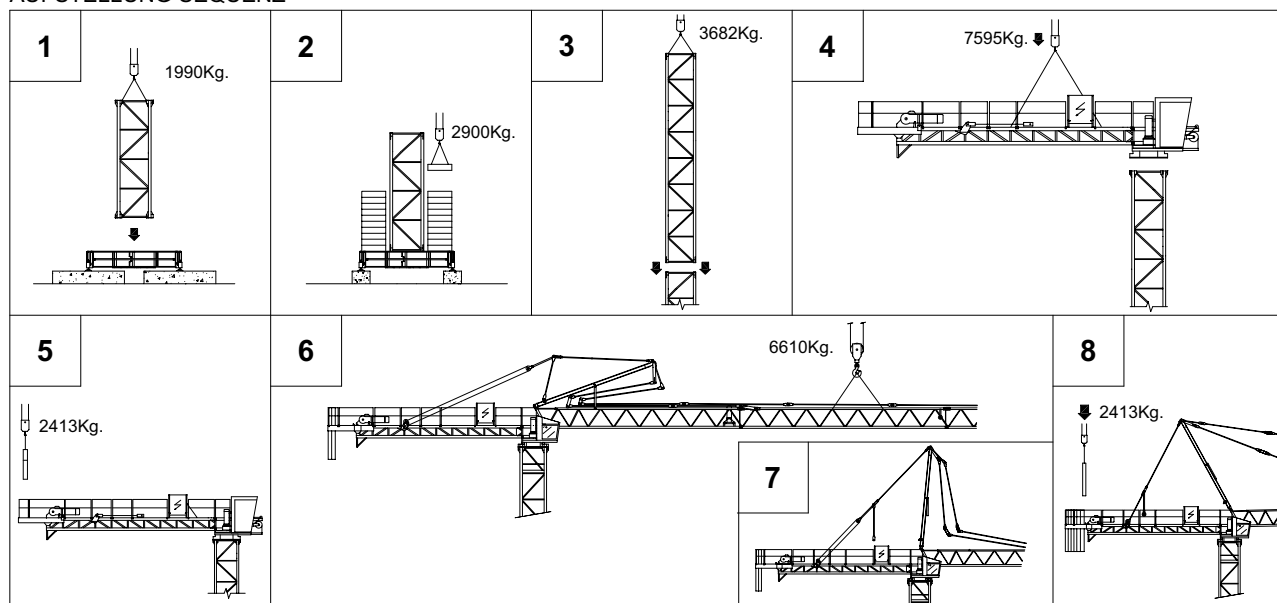
FORZA MOTRICE TOTALE TOTAL INSTALLED POWER PUISSANCE TOTALE DES MOTEURS GESAMT-MOTORENLEISTUNG	18,4 Kw (25HP)	24,3 Kw (33HP)
	37 Kw	43 Kw

LISTA DEI PESI / PACKING LIST
LISTE DE COLISAGE / KOLLI-LISTE

Pos. Item	Pezzi Pieces	Denominazione Description	Schizzo Sketch	Dimensioni Dimensions			Peso Weight (Kg)		
				L	W	H	Unit.	Total.	
1	1	Elemento di freccia Jib element Elément de flèche Ausleger	N°1 	11,780	1,200	1,451	972	972	
	1		N°2 	3,070	1,200	1,180	233	233	
	1		N°3 	11,770	1,200	1,180	843	843	
	1		N°4 	5,970	1,200	1,180	400	400	
	1		N°5 	11,760	1,200	1,180	776	776	
	1		N°6 	5,960	1,200	1,180	368	368	
	1		N°7 	2,130	1,200	1,180	160	160	
	1	Puntale freccia Jib point Elément pointe Spitzelement		1,315	1,200	1,300	75	75	
2	1	Cuspide A frame Pointe Turmspitze		7,350	0,415	1,105	459	459	
3	1	Controfreccia girevole,organo di sollev. quadro elettrico, carrello freccia etc. Counterjib-turntable, hoisting winch, trolley jib, electrical box etc. Contreflèche tournante, treuil de levage, chariot de flèche, armoire électrique etc. Gegenausleger, Hubwinde, Drehwerk Laufkatze, Schaltschrank etc.		11,955	1,980	2,475	6635	6635	
	1	Controfreccia girevole,organo di sollev. quadro elettr., carrello freccia,cabina. Counterjib-turntable, hoisting winch, acces balcony, electrical box, trolley jib, cabin etc. Contreflèche tournante,treuil de levage, chariot de flèche, armoire électrique, cabine. Gegenausl., Drehwerk, Hubwinde, Laufkatze, Kabine, Schaltschrank, Kabinepodest.		11,955	3,150	2,475	7205	7205	
4	1	Controfreccia girevole,organo sollev., quadro elettrico, carrello freccia,cabina elemento porta-blocchi. Counterjib-turntable, hoisting winch, cabin,trolley jib, electrical box, acces balcony,terminal element. Contrefl. tournante,treuil de levage, chariot de flèche armoire électrique, cabine et element terminal. Gegenausl., Drehwerk, Hubwinde, Laufkatze, Kabine Schaltschrank, Kabinepodest, Gegengewichtelement.		13,500	3,150	2,475	7595	7595	
5	4	Blocchi di contrappeso Counterweight block Contre-poids Gegengewichtsblöcke		A108	1,430	0,295	3,265	2738	8214
	1			B99	1,430	0,260	3,265	2413	2413

Pos. Item	Pezzi Pieces	Denominazione Description	Schizzo Sketch	Dimensioni Dimensions			Peso Weight (Kg)		
				L	W	H	Unit.	Total.	
6	-	Elemento di torre Tower element Elément de mature Turmstück		2,950	1,700	1,500	1172	1172	
7	-			4,425	1,700	1,500	1590	1590	
8	-			5,900	1,700	1,500	1990	1990	
9	-			11,800	1,700	1,500	3682	3682	
10	1	Tronchetto di fondazione Expandable foundation element Elément a sceller Fundamentanker		1,465	1,780	1,780	780	780	
11	1	Trave principale della crociera di base Base main beam Poutre de chassis de base Hauptträger für Kreuzgelenk		4,5x4,5mt	6,530	0,710	0,760	2120	2120
				3,8x3,8mt	5,535	0,710	0,760	1460	1460
12	2	Semitrave della crociera di base Half base beam Sempoutre de chassis de base Halbräger für Kreuzgelenk		4,5x4,5mt	3,200	0,590	0,770	1030	2060
				3,8x3,8mt	2,620	0,590	0,770	940	1880
13	4	Blocco di appoggio Concrete pad Sabot en béton Betonfuss (B2)		3,600	0,800	0,600	3925	15700	
14	2	Bilancino di traslazione folle Driven bogie Boggie fou Fahrschemel ohne motorantrieb		1,080	0,230	0,515	415	830	
15	2	Bilancino di traslazione motorizzato Driving bogie Boggie motorisée Fahrschemel mit motorantrieb		1,550	0,500	0,515	535	1070	
16	26	Blocco di zavorra Base ballast block Lest de base Grundballastblöcken (GB3)		3,600	1,200	0,300	2900	75400	

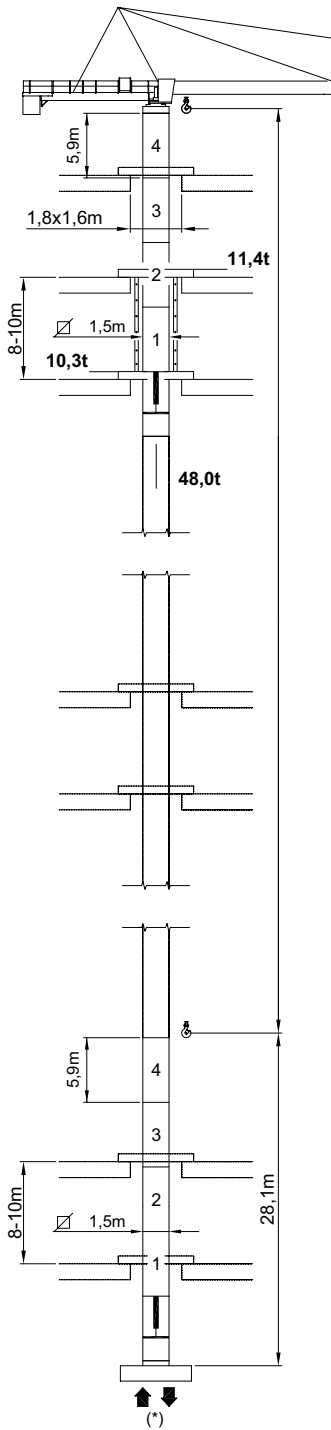
SEQUENZA DI MONTAGGIO
ASSEMBLING SEQUENCE
SEQUENCE DE MONTAGE
AUFSTELLUNG SEQUENZ



8

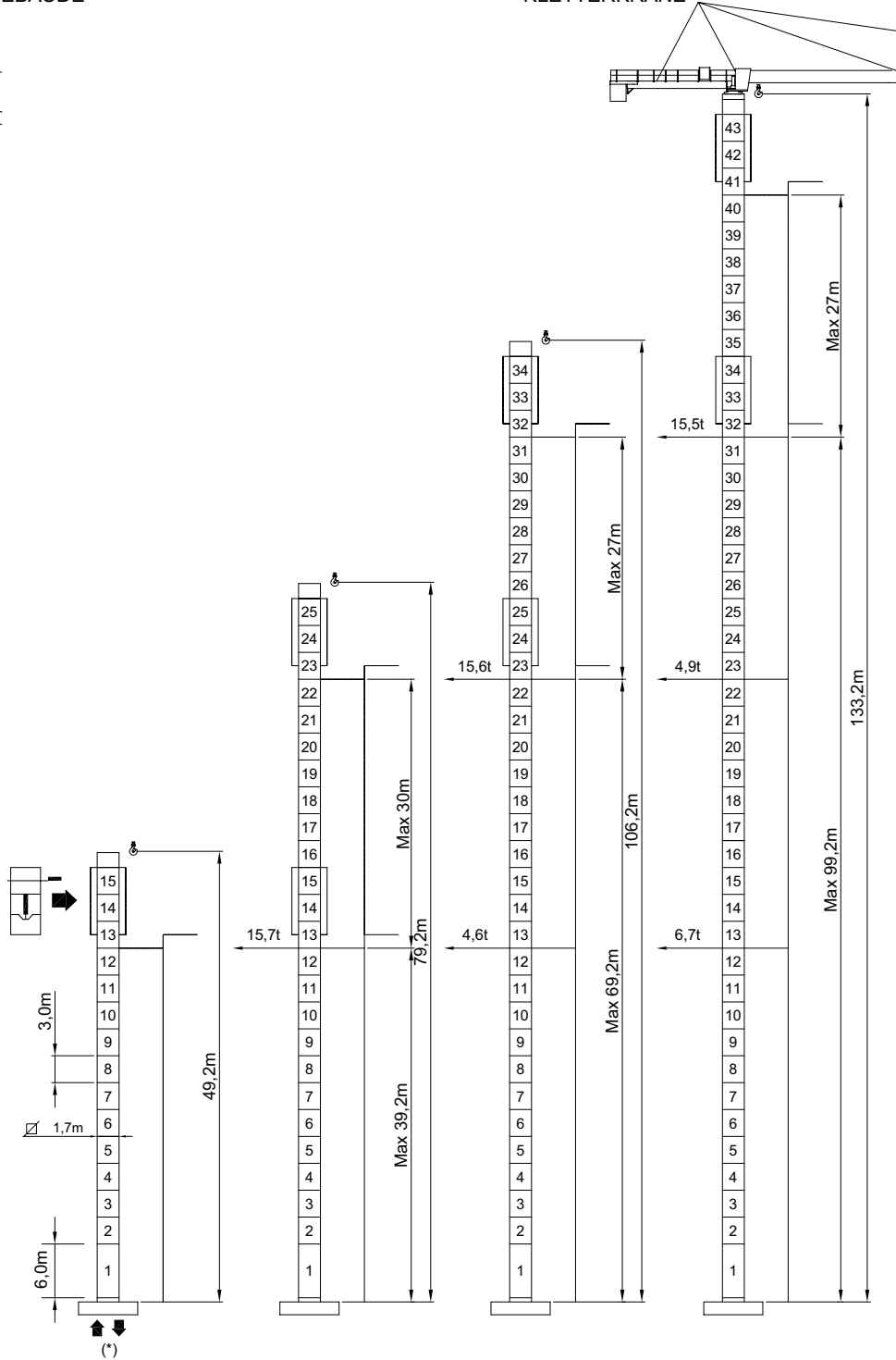
MR 108 RI

RAMPANTE
FLOOR CLIMBING
TELESCOPABLE SUR DALLES
KLETTERKRANE IM GEBAUDE



MR 108 HC

A SOPRALZO IDRAULICO
EXTERNAL CLIMBING
TELESCOPABLE
KLETTERKRANE



* Vedi tabella a pag. 4 - See table at page 4 - Voir table à la page 4 - Siehe tafel an seite 4

CARLO RAIMONDI S.p.A

Stabilimento:
Corso Garibaldi 253 - 20025 Legnano (MI) - ITALY - Fax: 0331450400 - Tel. 0331548061 - 0331545308 - www.raimondigru.it

Gru a torre per l'edilizia
Building tower cranes
Grues tour
Turmdrehkrane

