



Gru automontante

*apertura torre-braccio idraulica
tempo di montaggio: minuti 7*

Self erecting crane

*hydraulic tower-arm opening
assembly time: minutes 7*

Schnellmontage Kran

*Hydraulische Öffnung vom Turm-Ausleger,
Montagezeit: 7 Minuten*

Grue montage rapide

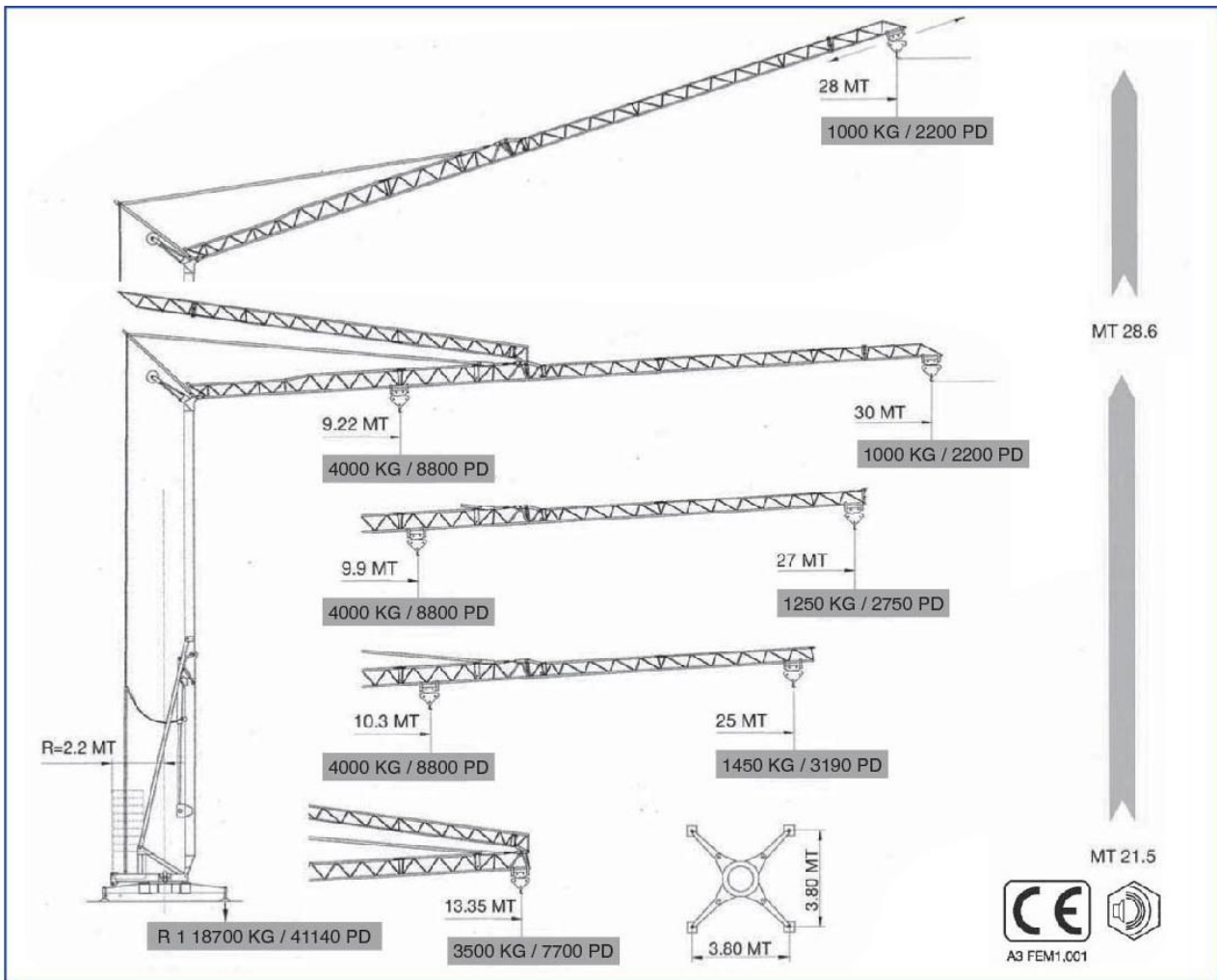
*ouverture tour-bras hydraulique
temps de montage: minutes 7*



DATI ILLUSTRATIVI NON IMPEGNATIVI CON RISERVA DI MODIFICA SENZA PREAVVISO
Disegni e dati tecnici riportati nel presente depliant hanno lo scopo esclusivamente illustrativo e sono validi solo per uso commerciale. Per il corretto utilizzo della gru e per la consultazione di qualsiasi dato tecnico, si rimanda al manuale d'uso e manutenzione della macchina. L'inosservanza delle norme generali d'utilizzo riportate nel manuale e/o l'uso irresponsabile della gru possono arrecare gravi danni alla salute



SPECIFICATION AND DATA NOT BINDING SUBJECT TO MODIFICATION WITHOUT NOTICE
Drawings and technical data contained in this brochure are only illustrative and are valid only for commercial use. For the correct use of the crane and the consultation of any technical data, see the manual and machine maintenance. Failure to observe the general rules for use in the manual and/or irresponsible use of the crane can cause serious damage to health.

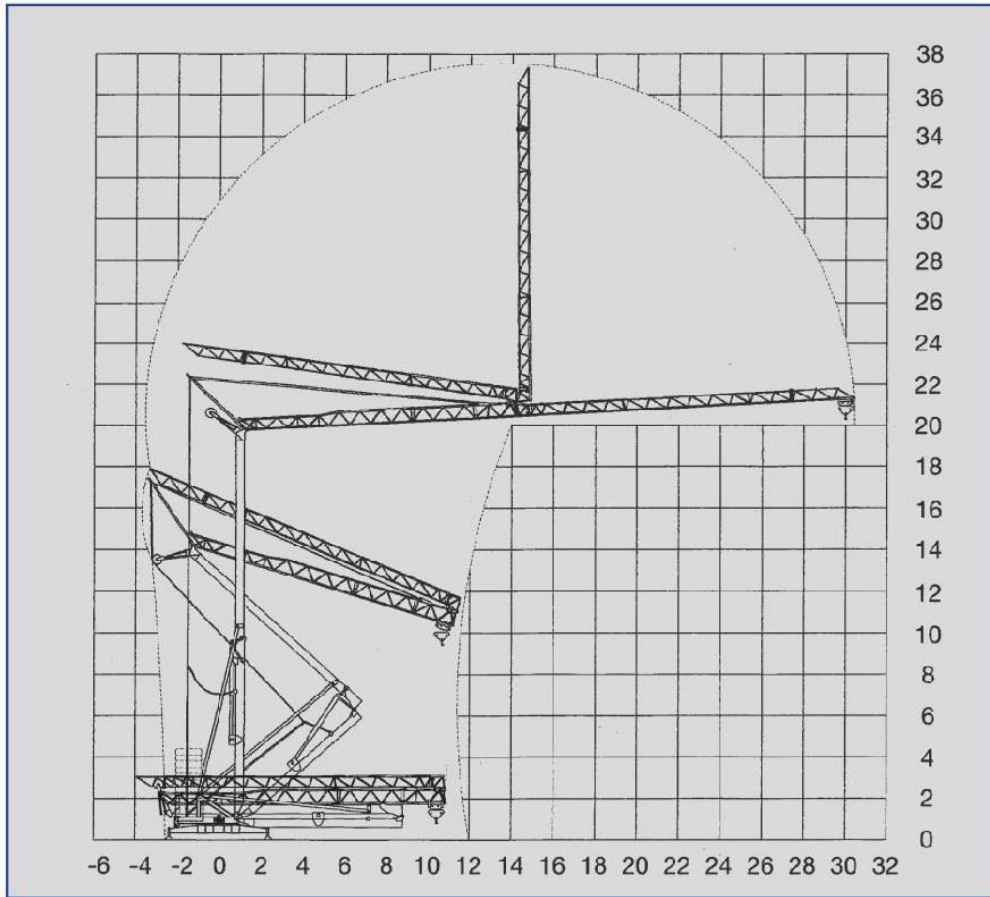


Curve di carico - Load curves - Lastkurven - Courbes de charges

		MT	9.22	12	16	20	24	28	30
		KG	4000	2909	2000	1622	1307	1087	1000
		PD	8800	6400	4400	3568	2875	2391	2200
		MT	9.9	12	16	20	24	27	
		KG	4000	3182	2259	1779	1436	1250	
		PD	8800	7000	4970	3914	3159	2750	
		MT	10.3	12	16	20	24	25	
		KG	4000	3359	2388	1881	1521	1450	
		PD	8800	7390	5253	4138	3346	3190	
		MT	12	13.35					
		KG	4000	3500					
		PD	8800	7700					

- Braccio impennato • Luffing jib
- Ausleger in Steilstellung
- Fleche relevée

1000 KG
2200 PD
COST



Ingombro
di montaggio

Space requirement

Abmessungen

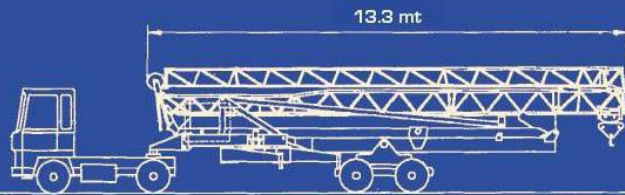
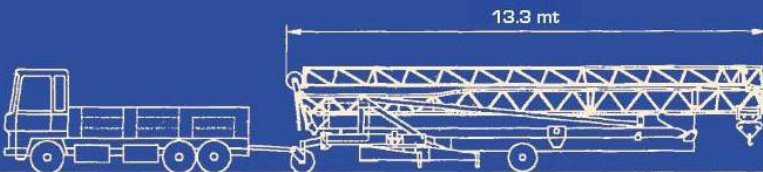
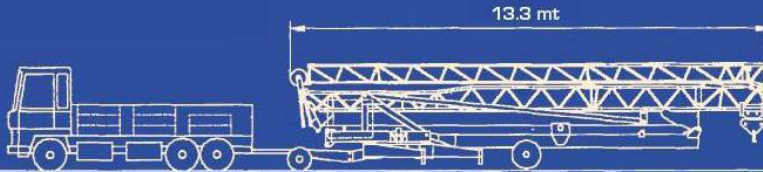
Encombrement
au montage

HY 30.1000		m/min	kw	cv	kg T.	⚡	
		5	1.8	2.5	2000	V	220 380
		20	6.7	9	2000	HZ	50 50
		40	8.2	11	1000	KW	13 13
		2.5	1.8	2.5	4000		
		10	6.7	9	4000		
		20	8.2	11	2000		
		18/36	1.5/2.2	2/3			
	t/min	0-1 progressif	2.2	3			

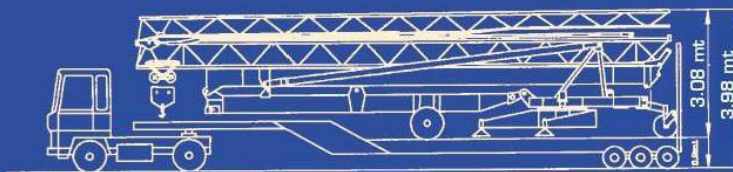
Peso della gru senza assali - Dead weight without axles **10800 KG**
 Konstruktionsgewicht ohne transportachse - Poids de construction sans essieux **23760 PD**

TRASPORTO - TRANSPORT

su strada - road - strasse - routier



su camion - on lorry - auf lkw - sur camion



container open top 40'

