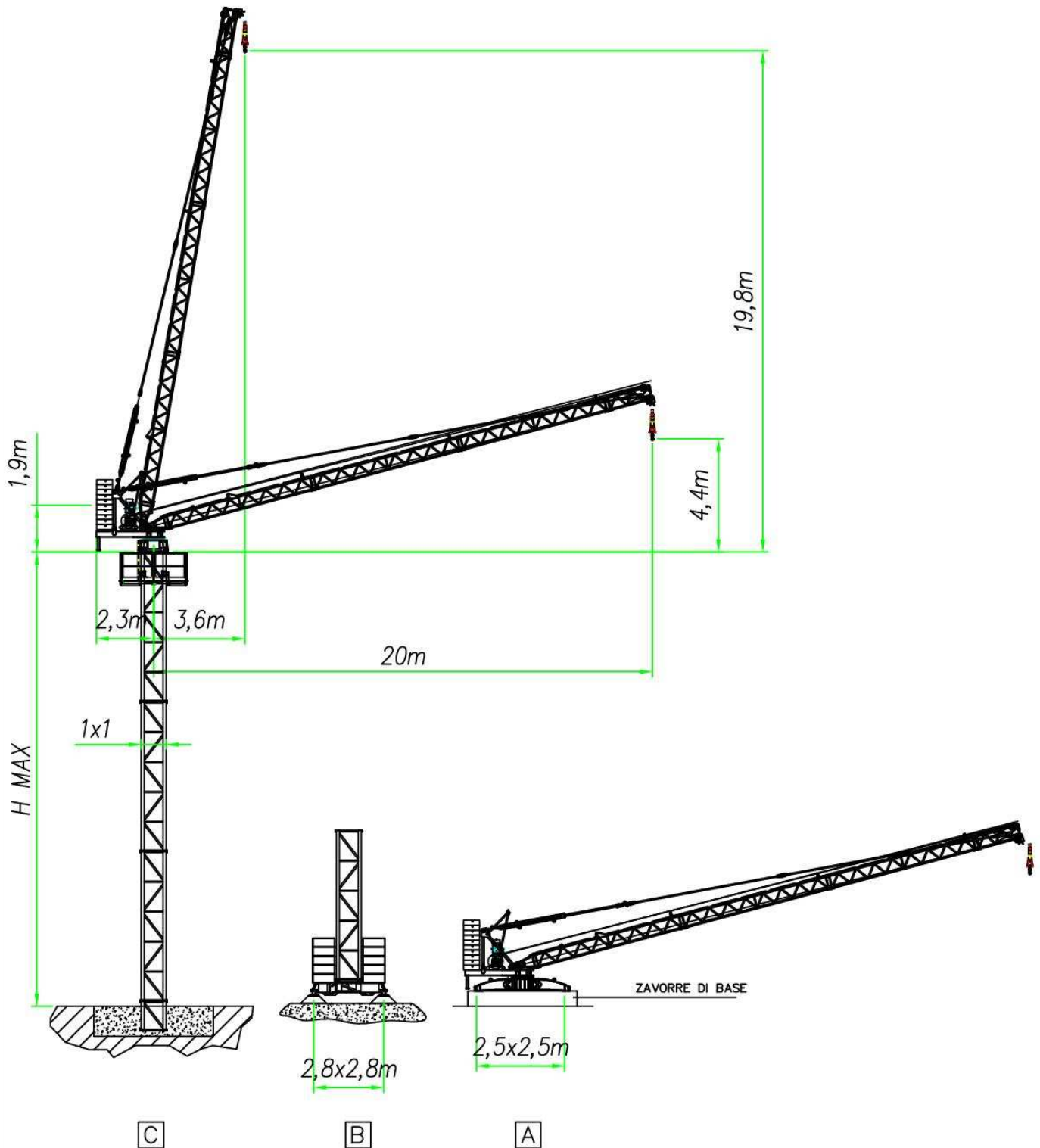
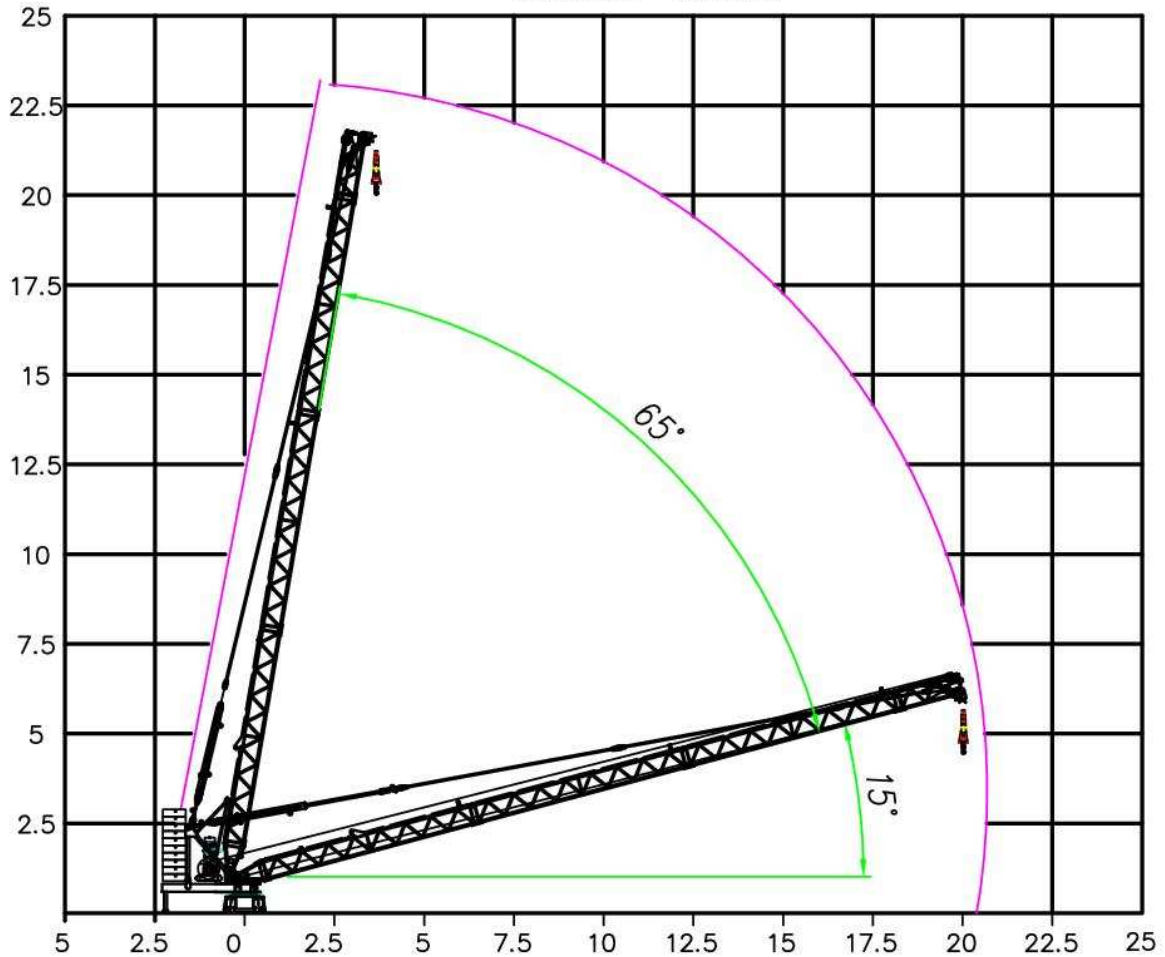


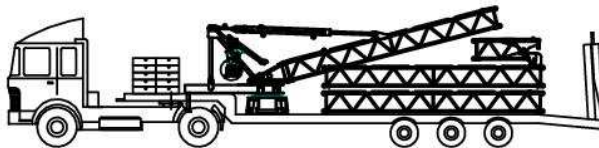
GRU A BRACCIO IMPENNABILE LUFFING JIB CRANE GRUES A' FLECHE RELEVABLE VERSTEEL AUSLEGER KRANEN



MONTAGGIO ASSEMBLY VERSAMMEWNG MONTAGE ASAMBLEA



TRASPORTO - TRANSPORT



Peso Gru Crane Weight	4000 kg
Peso zavorra Counterweight block	5000 kg

ALTEZZA MASSIMA AL GANCIO - MAX HEIGHT UNDER HOOK

TIRO II - 2 ROPE FALLS	100 m
TIRO IV - 4 ROPE FALLS	50 m

MECCANISMI MECHANISMS ANTRIEBE MECANISMES MECANISMOS



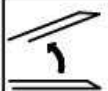

		SPEED m/min	LOAD Kg	POWER Kw
Sollevamento Hoisting		0-40	1000	9.5 KW
		0-20	2000	
		0-20	1800	9.5 KW
		0-10	3500	
Brandeggio Luffing		70 s		7.5 KW
Rotazione Slewing		0-0.9 giri/min rpm		1.5 KW
Total Power Consumption Potenza necessaria		26 KVA		Rete elettrica Mains supply
				400V - 50 Hz

DIAGRAMMA PORTATA LOAD DIAGRAM LASTKURVEN COURBES DE CHARGES CURVAS DE CARGAS

TIRO II - 2 ROPE FALLS

ALTEZZA m. HEIGHT m.	4,4	8,8	12	14	15,7	17	18	18,8	19	19.8
SBRACCIO m. JIB m.	20	18	16	14	12	10	8	6	5,5	3,6
CARICO kg. LOAD kg.	1000	1110	1250	1430	1660	2000	2000	2000	2000	2000

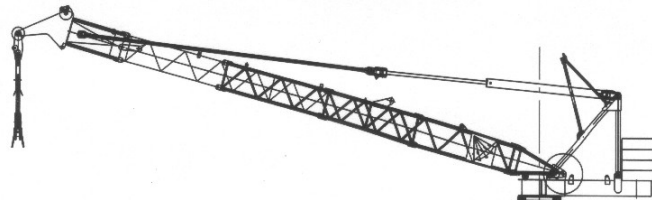
TIRO IV - 4 ROPE FALLS

ALTEZZA m. HEIGHT m.	4,4	8,8	12	14	15,7	17	18	18,8	19	19.8
SBRACCIO m. JIB m.	20	18	16	14	12	10	8	6	5,5	3,6
CARICO kg. LOAD kg.	1000	1110	1250	1430	1660	2000	2550	3300	3500	3500

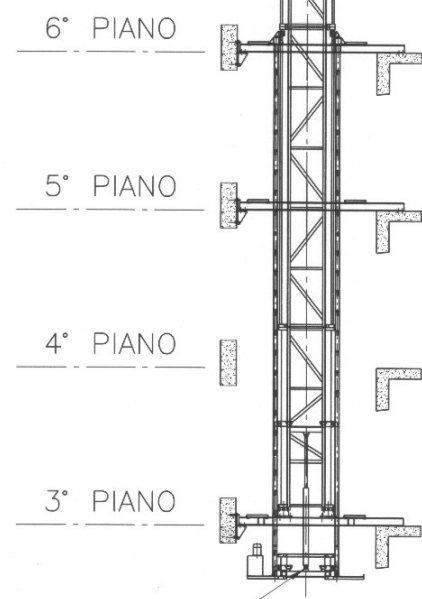
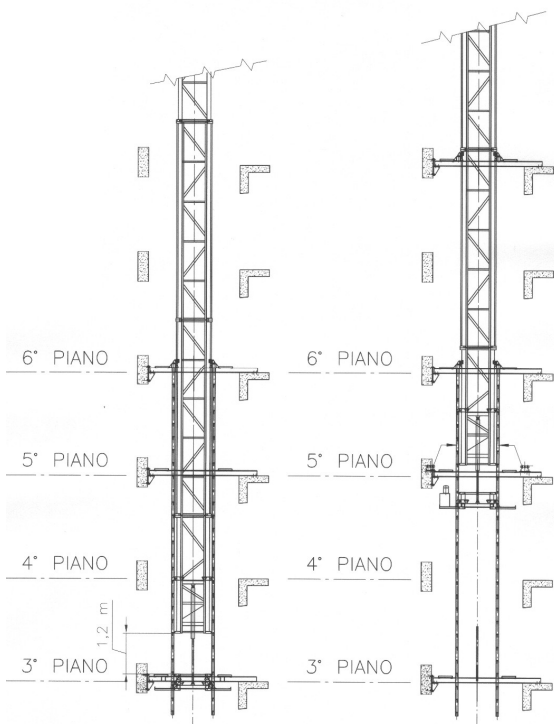
LISTA DEI PESI PACKING LIST KOLLI-LISTE LISTE DE COLLISAGE LISTA DE PESOS

PESO DEI COMPONENTI E MISURE DI MASSIMA COMPONENTS WEIGHT AND OVERALL DIMENSIONS		L m.	W m.	H m.	Kg.
Code e testa del braccio First and terminal Jib element		1,1 0,5	0,5 0,5	0,5 0,5	110 140
Elemento braccio standard Intermediate Jib element		2,09	0,5	0,5	90
Braccio completo + tiranti e bozzello Complete Jib + jib tie-rod Swivel block		21,5 11,5	0,5 0,5	0,5 0,5	1350 750
Piattaforma rotante + portaralla Piattaforma accesso e servizio Turntable + fixed base service and access balcony Lifting drum + motors + reducers		2,89	2,91	2,5	2450
Elemento di torre Tower element		6,0	1,0	1,0	985
Cilindro idraulico Hydraulic piston		L1=2,515 L2=4,655		∅0,16	300
Zavorra di contrappeso Counterweight block		1,5	0,67	0,015	104
Passerella accesso gru Access crane balcony		2,5	0,8	1,2	100
Trave principale Base e bracci stabilizzatori Cross-base main beam and two arms		4,16 1,15	0,3 0,3	0,49 0,49	1000 200
Zavorra di base Cross-base ballast block		2,4	0,7	0,53	2000

VERSIONE RAMPANTE FLOOR CLIMBING TELESCOPABLE SUR DALLES KLETTERKRANE IM GEBAUDE VERSÃO RAMPANTE



SCHEMA SOPRALZO RAISING DIAGRAM DIAGRAM ERHOHEN SCHÉMA ELEVER DIAGRAMA AUMENTANDO



DATI ILLUSTRATIVI NON IMPEGNATIVI CON RISERVA DI MODIFICA SENZA PREAVVISO
Disegni e dati tecnici riportati nel presente depliant hanno lo scopo esclusivamente illustrativo e sono validi solo per uso commerciale. Per il corretto utilizzo della gru e per la consultazione di qualsiasi dato tecnico, si rimanda al manuale d'uso e manutenzione della macchina. L'inosservanza delle norme generali d'utilizzo riportate nel manuale e/o l'uso irresponsabile della gru possono arrecare gravi danni alla salute.



SPECIFICATION AND DATA NOT BINDING SUBJECT TO MODIFICATION WITHOUT NOTICE
Drawings and technical data contained in this brochure are only illustrative and are valid only for commercial use. For the correct use of the crane and the consultation of any technical data, see the manual and machine maintenance. Failure to observe the general rules for use in the manual and/or irresponsible use of the crane can cause serious damage to health.

SOPRALZO IDRAULICO EXTERNAL CLIMBING TELESCOPABLE SYSTEM KLETTERKRANE AUMENTAR HIDRÁULICO

